

OUR MESSAGE




for Sustainable



for Cleanliness



for Future

**Innovation &
Globalization**



for Comfort



for Control



for Design

We create comfortable lives for people around the world with "made-in-Japan quality" and innovative manufacturing.

-  History
-  Worldwide locations
-  Global business activities
-  Project references
-  Global development & Production bases
-  High-quality development & Production facilities



Control

Operation from Anywhere

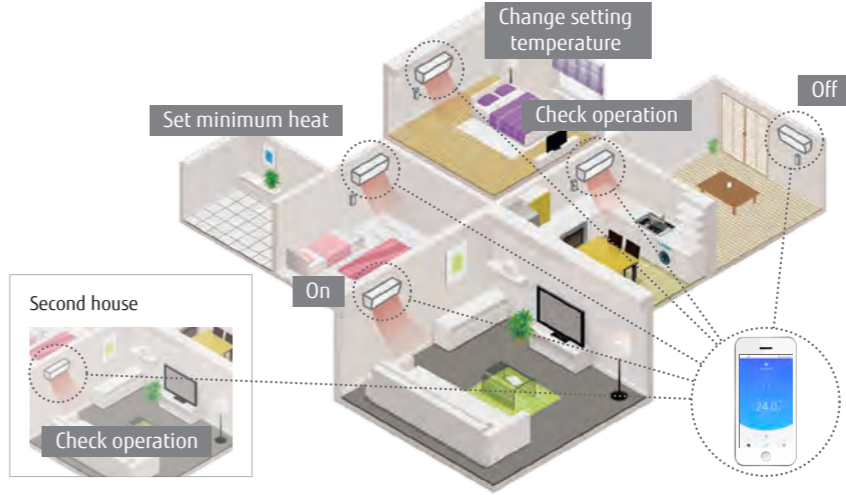
Using the Internet of Things (IoT), Fujitsu General is actively providing services that allow users to control their air conditioners from their smartphones. We are also expanding our open co-creation activities with external partners to deepen the development of new functions and services using IoT and artificial intelligence (AI) to develop safe and convenient air conditioners.



User-friendly screen display enables easy operation. With the WLAN adapter and the FGLair app, you can control the heating and cooling of your home anytime, anywhere.

Should you forget to turn off the system before you leave home, you don't have to worry.

"FGLair" is a software application that allows users to control Fujitsu General air conditioners from anywhere outside with a mobile device while out or on the move.



WLAN adapter

The dedicated WLAN adapter enables the air conditioner to be operated by smartphone or tablet PC from outside the home.



+

Download Free

Download on the App Store | Get it on Google play



Compact wired remote controller

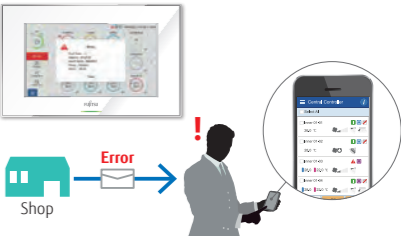
- Large screen and simple display**
- Large screen, yet compact in size
 - Large, easy-to-read letters are used.
 - The controls are simple and easy to understand.



Central remote controller for VRF system

The central remote controller uses a touch panel screen to display multiple menus on the top screen. Just touch the menu you want to operate, and the necessary window will pop up, and allow intuitive operation.

Remote monitoring and operation
The central remote controller enables monitoring and control of a tenant's air conditioner anytime, anywhere.





Design



Create a Beautiful Space

Fujitsu General offers a wide range of products for the European market, including models with unique textural designs, award-winning models that integrate with room interiors, and Cassette type models with different designs that match office spaces. We also have a lineup of models with elegant designs, such as the Ceiling type models with its beautiful curved surface.

KE Series

Wall-mounted type

KE Designer Series

We have designed this series exclusively for the European market. The exterior design harmonizes beautifully with any decor and adds comfortable elegance to the room. The light, elegant and three-dimensional expression achieved by the curved surface looks beautiful from any angle.



CMF: Color Material Finish

The texture of the front panel expresses the craftsmanship of Europe, and changes its expression with the changing light of the day.

Design award-winning products

Wall-mounted type, design Series



Light Elegant Design

New Ceiling type design

The light, elegant and three-dimensional expression achieved by the curved surface gives a sense of comfort and well-being.



Different Cassette type Designs



Compatible with grid ceiling systems
Compact cassette Series
for grid ceiling



Beautiful design from any angle
Cassette type Circular flow Series
White panel



For ambience with dimmed lighting
Cassette type Circular flow Series
Black panel

2022 New Products



Split & Multi-split indoor unit
Wall-mounted type Standard Series
High-efficiency & Comfort



Wall-mounted type

Designer Series, Standard Series, ECO Series

S-016-027

- 7-36 classes, 23 models
- High-efficiency
- New WLAN adapter (option)
- R32 refrigerant & low refrigerant volume
- Easy access to the flare pipe connection



Duct type

High static pressure duct

S-040

- 45/54 classes, 2 models
- Link up with a variety of Central Control System (option)
- Easy installation
- Flexible Installation



2-unit to 5-unit Multi-split type

Indoor units

M-006, 022

Wall-mounted type
Designer Series, Standard Series

- 16 models
- Capacity range
from 7,000 to 24,000 BTU



Residences

For Apartments & Houses

From the living room, where the whole family relaxes, to bedrooms, children's rooms and other small rooms, Fujitsu General has designed systems suited to spaces that reflect the rhythm of life.



 **A variety of indoor units to suit the characteristics of each room**



For Living & Dining room

Cool beauty design Series
This series features a special European-style design. The light, elegant and three-dimensional expression achieved by the curved surface is beautiful from all angles.



For Large rooms

Standard & Comfort Series
The basic functions and powerful, comfortable airflow volume controls are optimal for large spaces.



For Primary bedrooms or Living rooms

Good Design Award winning, Quiet Series
High performance, low noise with emphasis on design




For Bedrooms or Home offices

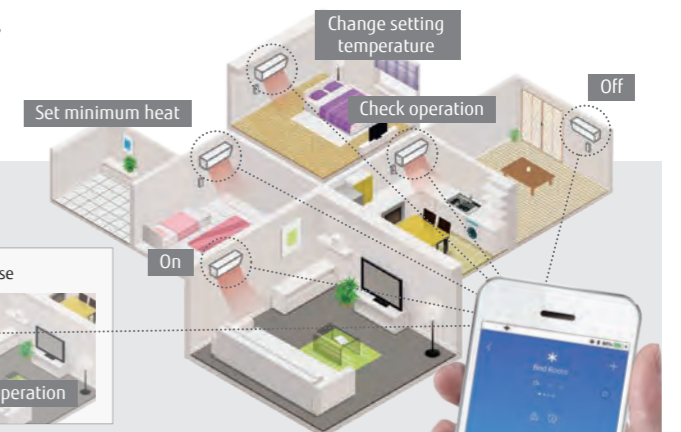
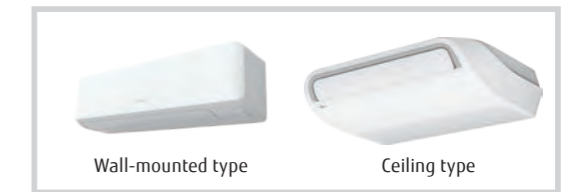
Standard & ECO Range Series
High performance and compact design suitable for bedrooms, home offices and other small spaces




Outdoor units suitable for residential environments

 **R32 Multi-split type released**

Models are now available with environment-friendly R32 refrigerant. A number of products with improved external design have been added to the indoor unit lineup.



 **Operation from anywhere**

With a single smartphone, you can check the operating status of not only your home air conditioner, but also the air conditioners in your second house or in your parents' house (up to 24 air conditioners).



Light Commercial & Residential SPLIT & MULTI-SPLIT

Energy saving design to provide a comfortable indoor environment while being environment-friendly.

These are air conditioners that are both user-friendly and environment-friendly. Fujitsu General air conditioners cater to a wide range of needs, from living rooms, bedrooms, stores, small offices, through to hotels.

SPLIT

- Refrigerant R32 models
 - Wall-mounted type
 - Cassette
 - Duct
 - Floor
 - Ceiling
- Refrigerant R410A models
 - Duct

MULTI-SPLIT

- Refrigerant R32 models
 - 2-unit to 5-unit Multi-split
 - Simultaneous Multi-split Twin/Triple
- Refrigerant R410A models
 - 6-unit to 8-unit Multi-split
 - Simultaneous Multi-split Twin/Triple/Double Twin



SPLIT & MULTI-SPLIT

Light Commercial &
Residential



Light Commercial & Residential SPLIT

- S-004 Split Overview
- S-006 Indoor Units Lineup
- S-008 Features
- S-013 Features Explanation
- S-050 ECO Series Lineup Specifications
- S-054 Feature Summary



Refrigerant R32 models

Wall-mounted type

- S-014 Flagship Series
- S-016 Designer Series
 - High Spec & Design
 - Cool Beauty Design
- S-020 Standard Series
 - High-Efficiency
 - High-Efficiency for Large Rooms
- S-026 ECO Series
 - Compact & Comfort
 - Comfort for Large Rooms

Cassette

- S-030 Compact 4-way Flow Series – Compact Size
- S-032 Circular Flow Series – Comfort for Large Rooms

Duct

- S-034 Slim Duct – Slim Design
- S-036 Medium Static Pressure Duct – Compact & Comfort
- S-038 Medium Static Pressure Duct – Standard
- S-040 High Static Pressure Duct

Floor, Ceiling

- S-046 Floor – Compact & Comfort
- S-048 Ceiling



Refrigerant R410A models

Duct

- S-042 High Static Pressure Duct
- S-044 Big Duct



Split Overview

Fujitsu General provides its customers with 6 types and 128 models of air conditioning systems perfect for various customer applications and layouts. Added to this lineup recently are the environment-friendly R32 refrigerant models.



Wall-mounted type, Designer Series, Cool Beauty Design



Ceiling



Wall-mounted type

Simple and easy to install, all models, including the flagship model equipped with dual-fan, are expertly designed to control airflow and save energy. The design, with its flat and simple appeal, perfectly matches room interiors. Many of the models in the lineup adopt the new environmentally friendly R32 refrigerant.



Duct

The main unit is hidden in the wall, making the room look neat and tidy. Mini Duct and Slim Duct models are also available for installation in narrow spaces between beams or above the ceiling. Large models, suitable for air conditioning vast spaces, allow multiple outlets to be installed in just one unit, and are perfect for atypical room layouts.



Cassette

The Cassette type, which blends in perfectly with the interior design, blows air in all four directions to create an even air-conditioning for the entire space. We have a variety of series including Compact models with a uniquely designed panel to match grid ceilings, and Circular Flow models that send airflow in a 360° direction.



Floor

The compact and slim design makes this model suitable for installation in commercial as well as residential buildings. This model is also recommended as a heating device because it delivers a warm airflow from both the top and bottom outlets.



Ceiling

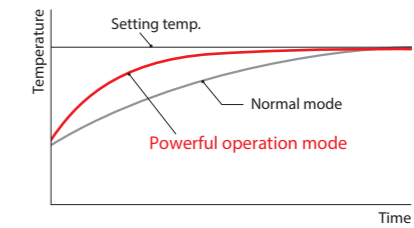
As with the wall-mounted unit, ceiling installation is very easy, and the unit's thin structure with a height of just 240 mm allows neat installation. The powerful airflow that can reach far away from the wide outlet is perfect for large meeting rooms, audiovisual rooms, and other rectangular spaces with a lot of depth.

More Comfort



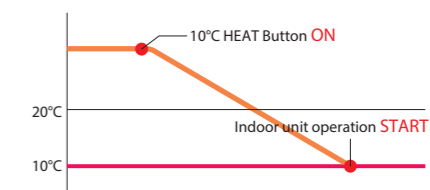
Powerful operation

Maximum airflow and maximum compressor speed are maintained for the period necessary to reach the set temperature quickly.



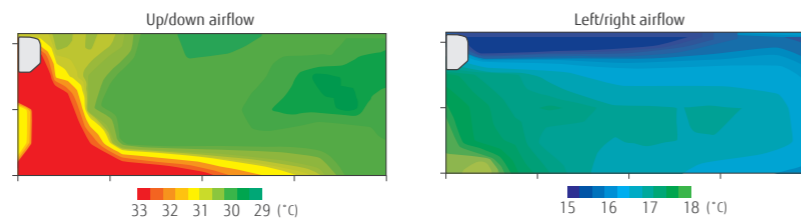
10°C Heat

After a person has left the room, the system switches to minimum heating operation to maintain the room temperature. (Maintained at 10°C)



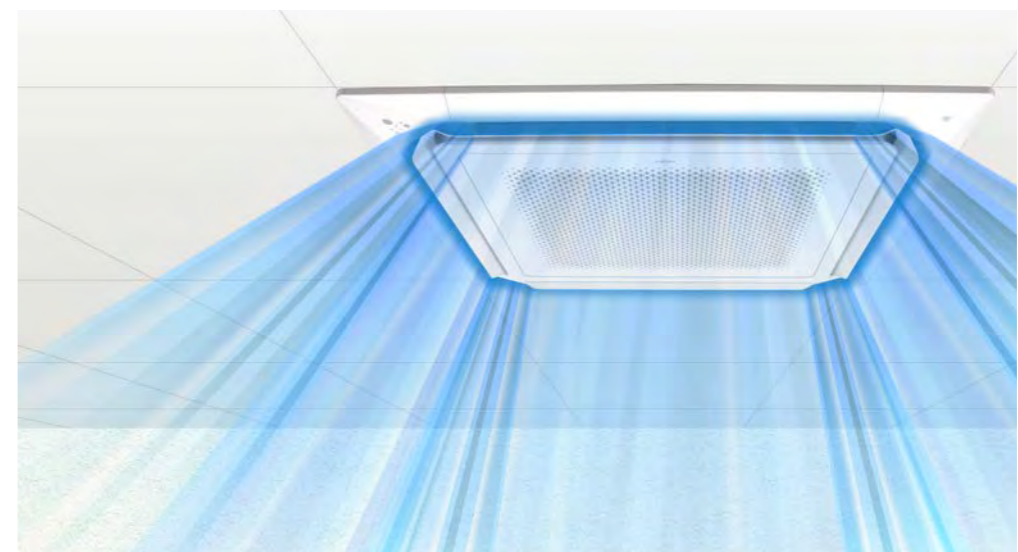
Power diffuser

These three technologies enable precise wind direction control and improve ventilation efficiency; our airflow control offers a more comfortable environment.



Powerful heating

A large heat exchanger, a large DC rotary compressor, and a high-performance inverter PCB provide high heating capacity even at low outdoor temperature.



Uniform air conditioning

Circular airflow to achieve uniform air conditioning without temperature unevenness in workspaces





Light Commercial & Residential MULTI-SPLIT

- M-002 Multi-split Overview
- M-004 Multi-split Outdoor Units Lineup
- M-006 2-unit to 8-unit Multi-split Connectable Indoor Units
- M-010 Simultaneous Multi-split Connectable Indoor Units
- M-048 Feature Summary



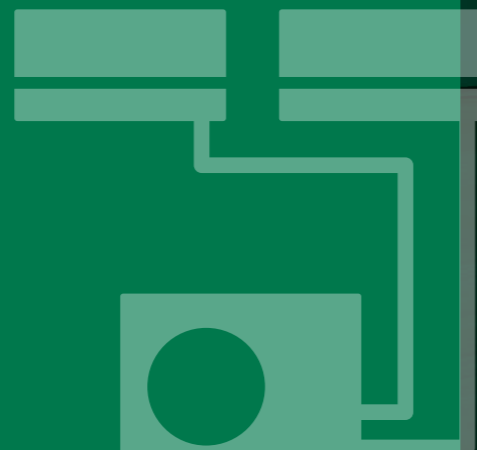
Refrigerant type R32 models

- M-012 2-unit to 5-unit Multi-split
- M-018 Simultaneous Multi-split Twin/Triple
-
- M-022 2-unit to 5-unit Multi-split Indoor Units Specifications
-
- M-026 2-unit to 5-unit Multi-split Combination Table



Refrigerant type R410A models

- 6-unit to 8-unit Multi-split**
- M-014 6-unit Multi-split
- M-016 8-unit Multi-split
- Simultaneous Multi-split Type**
- M-020 Simultaneous Multi-split Twin/Triple/Double Twin
-
- M-024 6-unit to 8-unit Multi-split Indoor Units Specifications
-
- M-036 6-unit to 8-unit Multi-split Combination Table



A single outdoor unit drives multiple indoor units, offering greater flexibility in system configuration.

If you wish to keep an entire floor or two or more rooms comfortable, we recommend you choose a multi-split air conditioning system with a single outdoor unit. Choose one that meets your air conditioning requirements from the variety of models we offer. You can mix and match indoor and outdoor units as you wish to build the system that best suits your needs.

Wall-mounted type



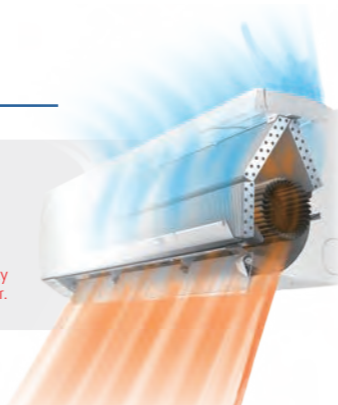
Highly-efficiency, compact design

The 004-014 models share the same design. The high-density and large heat exchanger achieves a highly-efficiency and compact design. The compact body blends in well with conference rooms and offices, providing comfortable air conditioning.

High-density heat exchanger



Slim tube design: 5 mm
Greater heat-exchanging capacity is achieved through the use of a high-density heat exchanger and a sub-heat exchanger.

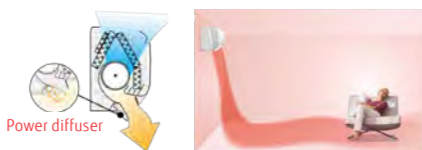


More comfortable airflow

The unique power diffuser provides comfortable air conditioning.

Heating

The vertical airflow provides powerful floor-level heating.



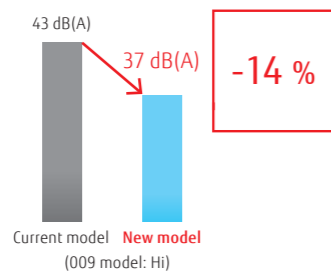
Cooling

The left/right airflow avoids blowing cool air directly at the occupants in a room.

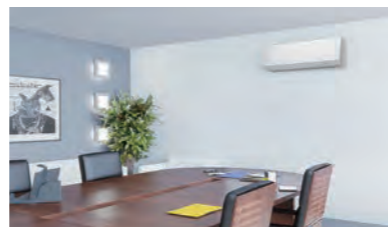


Quiet operation & 6-Step Fan Speed Control

The airflow structure achieves significant noise reduction. Multistep airflow adjustment to suit the environment



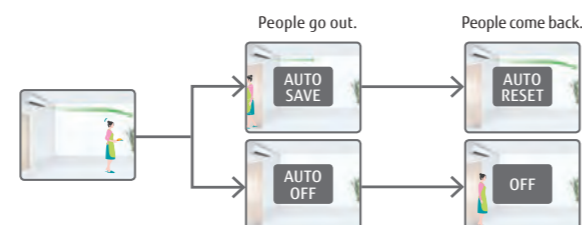
- 6-Step Speed
- High
- Med-High
- Med
- Med-Low
- Low
- Quiet



* Remote controller is compatible with the following:
UTY-RNRV25/UTY-RLRV/UTY-RSRV/UTY-RHRV/UTY-DCGY22/UTY-ALGXZ1/UTY-APGXZ1

The Occupancy sensor contributes to further energy savings.

Energy saving operation starts automatically by detecting the motion of a person. Two modes of save operation mode and stop mode can be selected.



Model: ASYA004GCGH/ASYA007GCGH/ASYA009GCGH
ASYA012GCGH/ASYA014GCGH
[external EEV]
ASYE004GCEH/ASYE007GCEH/ASYE009GCEH
ASYE012GCEH/ASYE014GCEH



Specifications

Model name	ASYA004GCGH	ASYA007GCGH	ASYA009GCGH	ASYA012GCGH	ASYA014GCGH	ASYE004GCEH	ASYE007GCEH	ASYE009GCEH	ASYE012GCEH	ASYE014GCEH	
Power source	Single phase, ~230 V, 50 Hz					Single phase, ~230 V, 50 Hz					
Capacity	Cooling	1.1	2.2	2.8	3.6	4.0	1.1	2.2	2.8	3.6	
	Heating	1.3	2.8	3.2	4.0	4.5	1.3	2.8	3.2	4.0	
Input power	W	12	19	20	25	36	12	19	34	25	
Airflow rate	High	450	550	610	690	800	450	550	610	690	
	Med-High	430	510	560	610	740	430	510	560	610	
	Med	400	470	510	560	680	400	470	510	560	
	Med-Low	380	410	440	530	610	380	410	440	530	
	Low	360	360	360	470	550	360	360	360	470	
	Quiet	310	310	310	330	330	310	310	310	330	
Sound pressure level	High	31	34	37	40	44	31	35	43	44	
	Med-High	30	32	35	37	42	30	32	38	42	
	Med	28	30	32	35	40	28	30	34	40	
	Med-Low	27	28	29	33	37	27	27	29	33	
	Low	26	26	26	30	34	26	24	24	30	
	Quiet	22	22	22	24	24	22	22	22	24	
Net Dimensions (H x W x D)	mm	268 x 840 x 203					268 x 840 x 203				
Weight	kg (lbs)	8.0 (18.0)	8.5 (19.0)	8.5 (19.0)	8.5 (19.0)	8.5 (19.0)	8.0 (18.0)	8.5 (19.0)	8.5 (19.0)	8.5 (19.0)	
Connection pipe diameter	Liquid (Flare)	6.35	6.35	6.35	6.35	6.35	6.35	6.35	6.35	6.35	
	Gas (Flare)	9.52	9.52	9.52	12.70	12.70	9.52	9.52	9.52	12.70	
Drain Hose Diameter (I.D./O.D.)	mm	13.8/15.8 to16.7					13.8/15.8 to16.7				
EV kit (optional)		-					UTR-EV09XB		UTR-EV14XB		

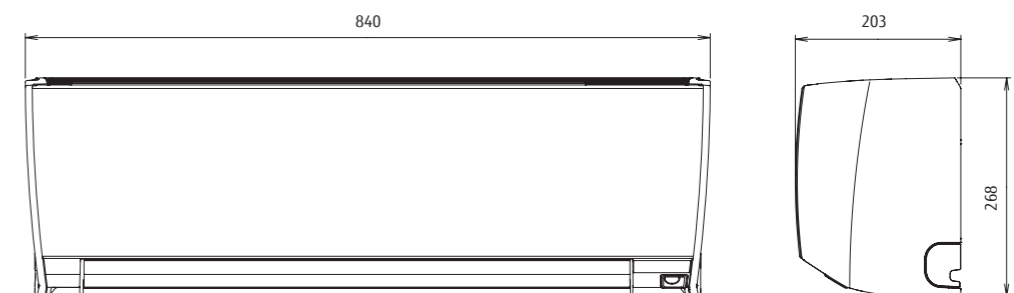
Note: Specifications are subject to the following conditions:
Cooling: Indoor temperature of 27°CDB/19°CWB, and outdoor temperature of 35°CDB/24°CWB.
Heating: Indoor temperature of 20°CDB/15°CWB, and outdoor temperature of 7°CDB/6°CWB.
Pipe length: 7.5 m; Height difference between outdoor unit and indoor unit: 0 m. Voltage: 230 [V]
When connecting ASY*004G**H, ASY*007G**H, ASY*009G**H to an outdoor unit other than the outdoor unit of the J-IVL Series, the gas pipe diameter should be Ø12.70 mm.

Optional parts

*For more details, please refer to the chapter "Optional parts".
External power supply unit: UTZ-GXXA, UTZ-GXXC*
WLAN adapter: UTY-TFSXZ1
Silver Ion Filter: UTR-FA16-5

Dimensions

(Unit: mm)



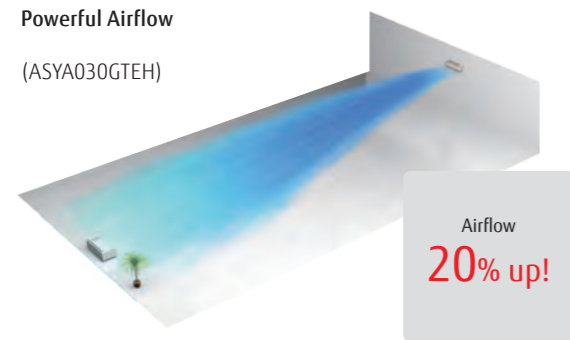
Wall-mounted type



Powerful & Comfort airflow

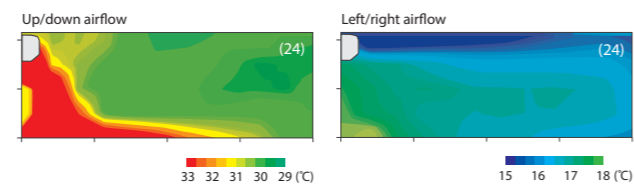
Powerful Airflow

(ASYA030GTEH)



Power diffuser

(ASYA18/24GBCH)



Occupancy sensor (ASYA030/034GTEH only)

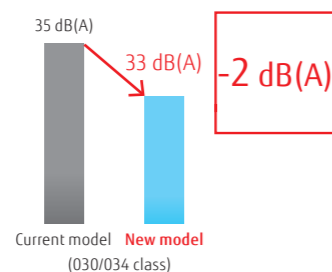
The Occupancy sensor detects the movements of people to suppress operation when people are in the room, automatically reducing power consumption to save electricity bills.

* UTY-RNRYZ5 Wired remote controller with touch panel and UTY-DCGYZ2 Central remote controller only

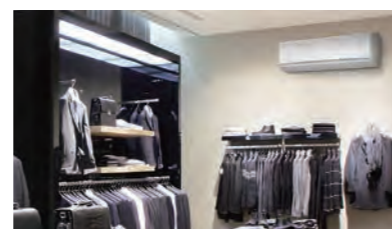


6-step fan speed control for quiet operation

The airflow structure achieves significant noise reduction. A 6-step sound level setting allows for multiple-step silent operations.



- 6-Step Speed
- High
- Med-High
- Med
- Med-Low
- Low
- Quiet



* Remote controller is compatible with the following: UTY-RNRYZ5/UTY-RLRY/UTY-RSRY/UTY-RHRY/UTY-DCGYZ2/UTY-ALGXZ1/UTY-APGXZ1

Model: ASYA18GBCH/ASYA24GBCH
ASYA030GTEH/ASYA034GTEH



ASYA18/24GBCH



ASYA030/034GTEH

Specifications

Model name		ASYA18GBCH	ASYA24GBCH	ASYA030GTEH	ASYA034GTEH
Power source		Single phase, ~230 V, 50 Hz			
Capacity	Cooling	5.6	7.1	9.0	10.0
	Heating	6.3	8.0	10.0	11.2
Input power		32	60	74	103
Airflow rate	High	840	1,100	1,440	1,620/1,520
	Med-High	-	-	1,200	1,300
	Med	770	910	1,050	1,120
	Med-Low	-	-	940	980
	Low	690	730	890	890
	Quiet	-	-	700	700
Sound pressure level	High	41	48	53	55/54
	Med-High	-	-	49	51
	Med	39	43	45	47
	Med-Low	-	-	42	43
	Low	35	35	39	39
	Quiet	-	-	33	33
Net Dimensions (H × W × D)		mm 320 × 998 × 238	320 × 998 × 238	340 × 1,150 × 280	340 × 1,150 × 280
Weight		kg (lbs) 15 (33)	15 (33)	18 (40)	18 (40)
Connection pipe diameter	Liquid (Flare)	6.35	9.52	9.52	9.52
	Gas (Flare)	12.70	15.88	15.88	15.88
Drain Hose Diameter (I.D./O.D.)		12/16		13.8/15.8 to 16.7	

Note: Specifications are subject to the following conditions:
Cooling: Indoor temperature of 27°CDB/19°CWB, and outdoor temperature of 35°CDB/24°CWB.
Heating: Indoor temperature of 20°CDB/15°CWB, and outdoor temperature of 7°CDB/6°CWB.
Pipe length: 7.5 m; Height difference between outdoor unit and indoor unit: 0 m. Voltage: 230 [V].
When connecting ASYA18GBCH to an outdoor unit other than the outdoor unit of the J-VL Series, the pipe diameter should be Ø9.52/Ø15.88 mm (Liquid/Gas).

Optional parts

*For more details, please refer to the chapter "Optional parts".

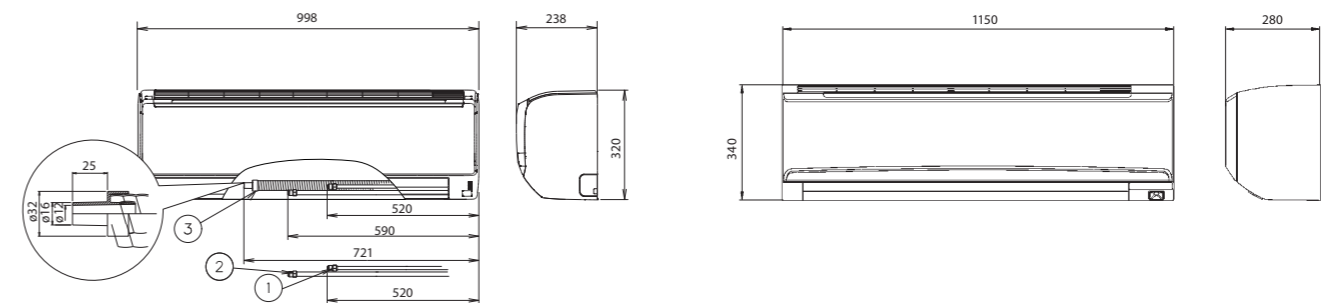
- External power supply unit: UTZ-GXXA (030/034)
- WLAN adapter: UTY-TFSXZ1 (030/034)
- Silver Ion Filter: UTR-FA13-3

Dimensions

(Unit: mm)

Models: ASYA18/ASYA24

Models: ASYA030/ASYA034



- ① Refrigerant pipe flare connection (Liquid)
- ② Refrigerant pipe flare connection (Gas)
- ③ Drain pipe connection